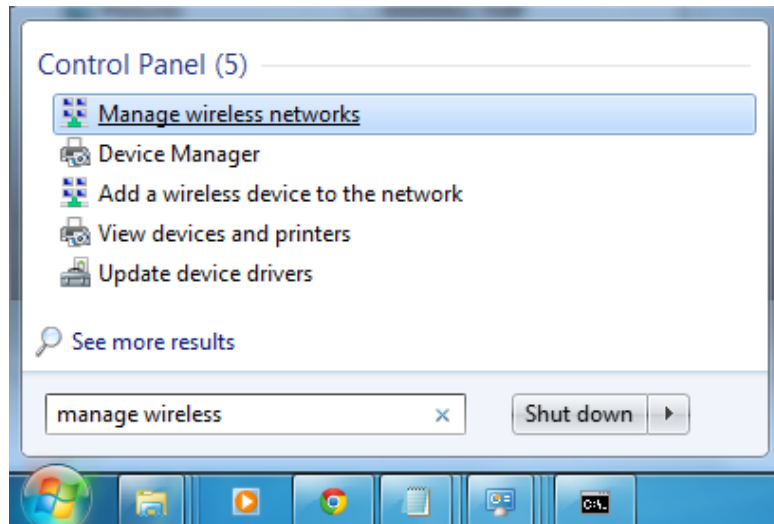


## Eduroam - Windows 7 connection instructions

**This wireless service requires a working wireless adapter in your computer that can use at least 802.11a (54Mbit/s), 802.11G (54Mbit/s) or faster and be able to utilize WPA2 security.**

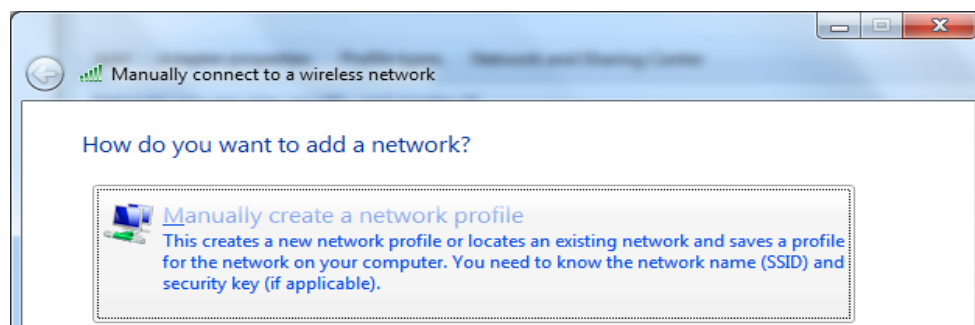
1. Click **start menu** and type in search box **“Manage wireless”**. Click **“Manage wireless networks”**.



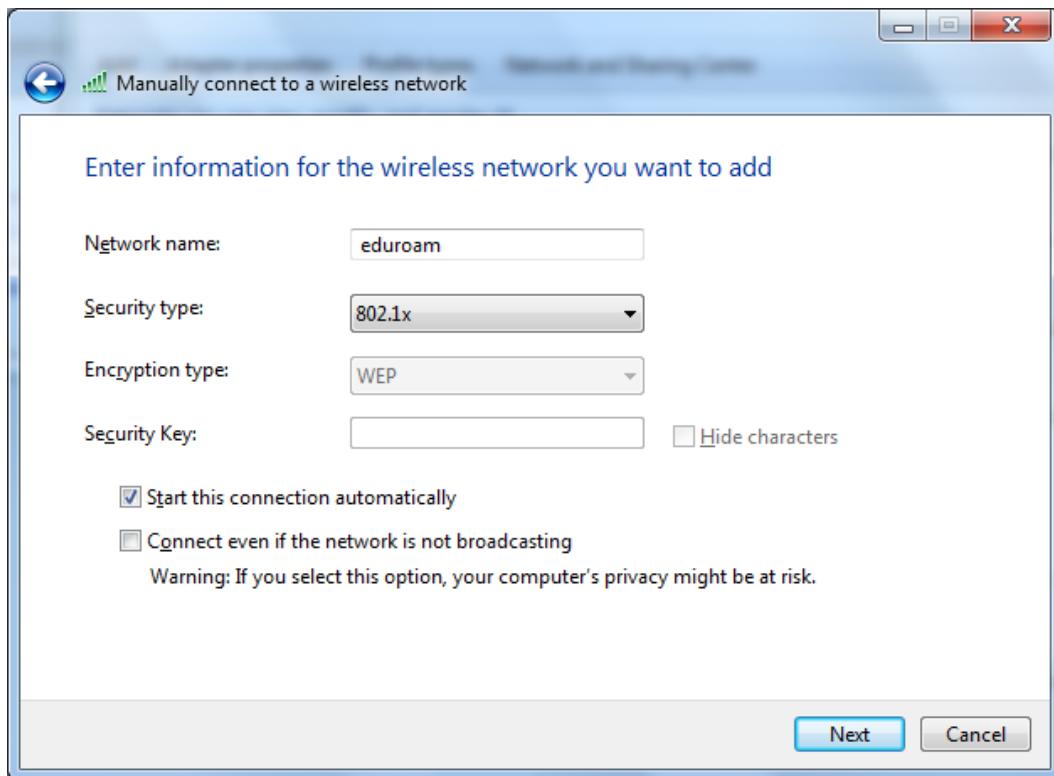
2. Click on **“Add”**.



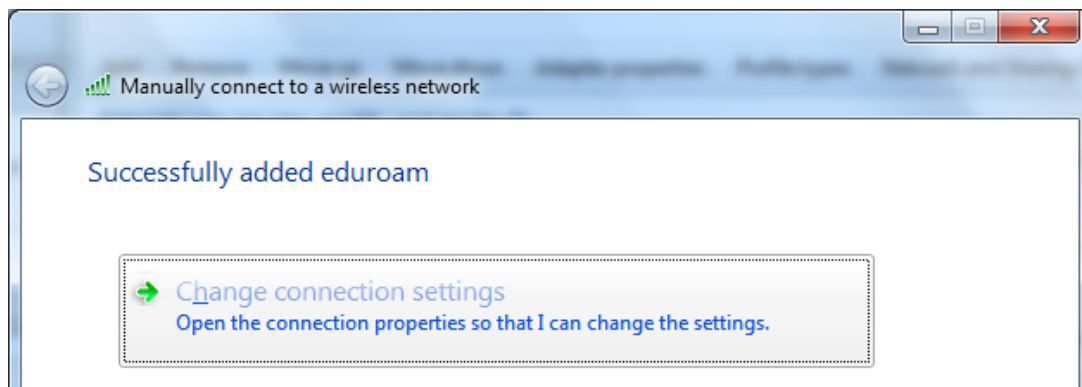
3. Click on **“Manually create a network profile”**.



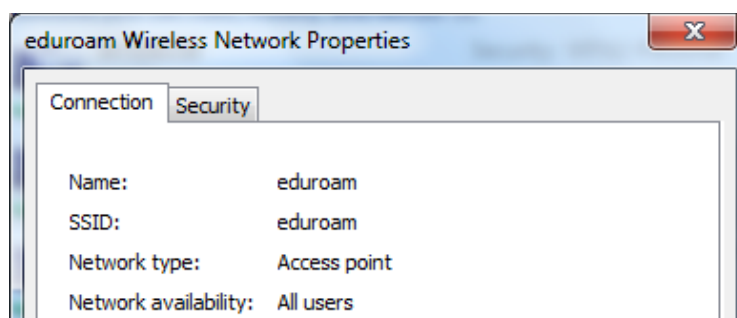
4. Set following details. Network name - **eduroam** ; Security type - **802.1x** . Click **Next**.



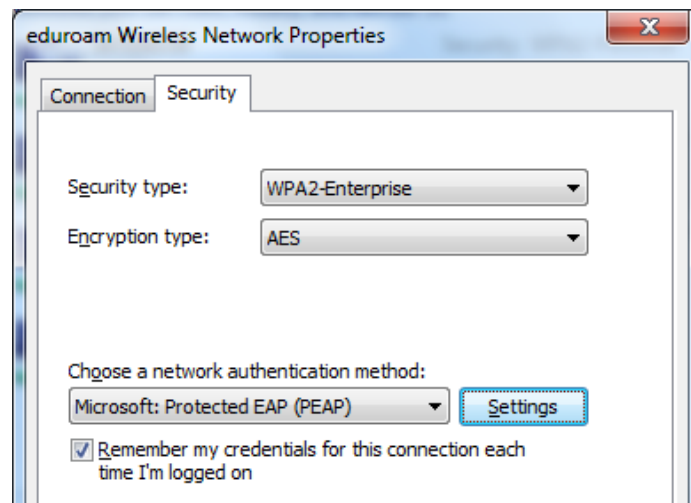
5. Click **“Change connection settings”**.



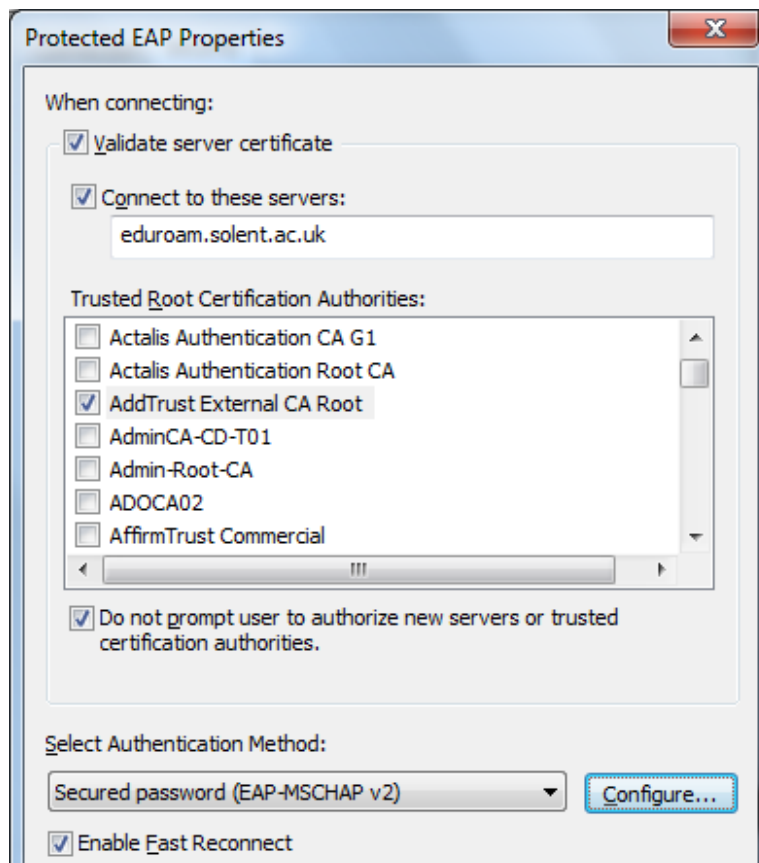
6. Click on **“Security”** tab.



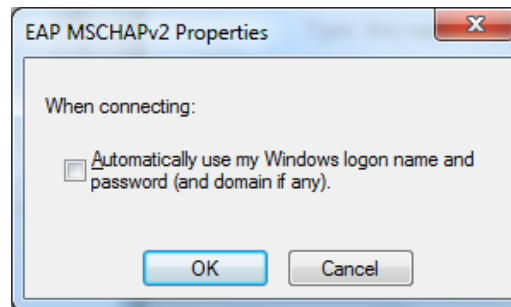
7. Click on “Settings”.



8. Tick “Validate server certificate” and “Connect to these servers”.  
Enter [eduroam.solent.ac.uk](https://eduroam.solent.ac.uk) and tick “AddTrust External CA Root”.  
Tick “Do not prompt user to authorize new servers or trusted certification authorities.”  
Click “Configure”.



9. Untick “Automatically use my Windows logon name and password”.  
Click “OK” and close other open properties.



10. Click on “eduroam” when in range.  
Enter **your Solent email address** as your username and your novell password.  
**Note: This is not your email address password, but the (novell) password you use to log in to your computer at work.**

